



Rome Pond WA, Jefferson County Purple Loosestrife Locations

Prepared by: Mike Alaimo and Amanda Smith

11/12/18



Purple Loosestrife Project Overview:

Objective: Assess Purple Loosestrife populations on Rome Pond WA, determine an eradication strategy, and implement the strategy.

Strategy: Collect Purple Loosestrife hosts, infect with beetles, and seed the infected plants back into the Rome Pond WA. Monitor and repeat as necessary to curb the spread and ultimately remove the Purple Loosestrife population.

Implementation:

4/28/17: Removal of 28 plants from a single location at Rome Pond. Location was an island in the NW corner of the main pond where there was extensive growth.

Although plants were difficult to extract with the last ice, roots with small sprouts were recovered. Potting occurred at Rome Pond. Three WWA volunteers, 1 DNR and 1 helper completed the task. One WWA boat was used.

4/28/18 – 6/28/18: The 28 plants were successfully kept and beetles released and netted by a volunteer local to Rome Pond.

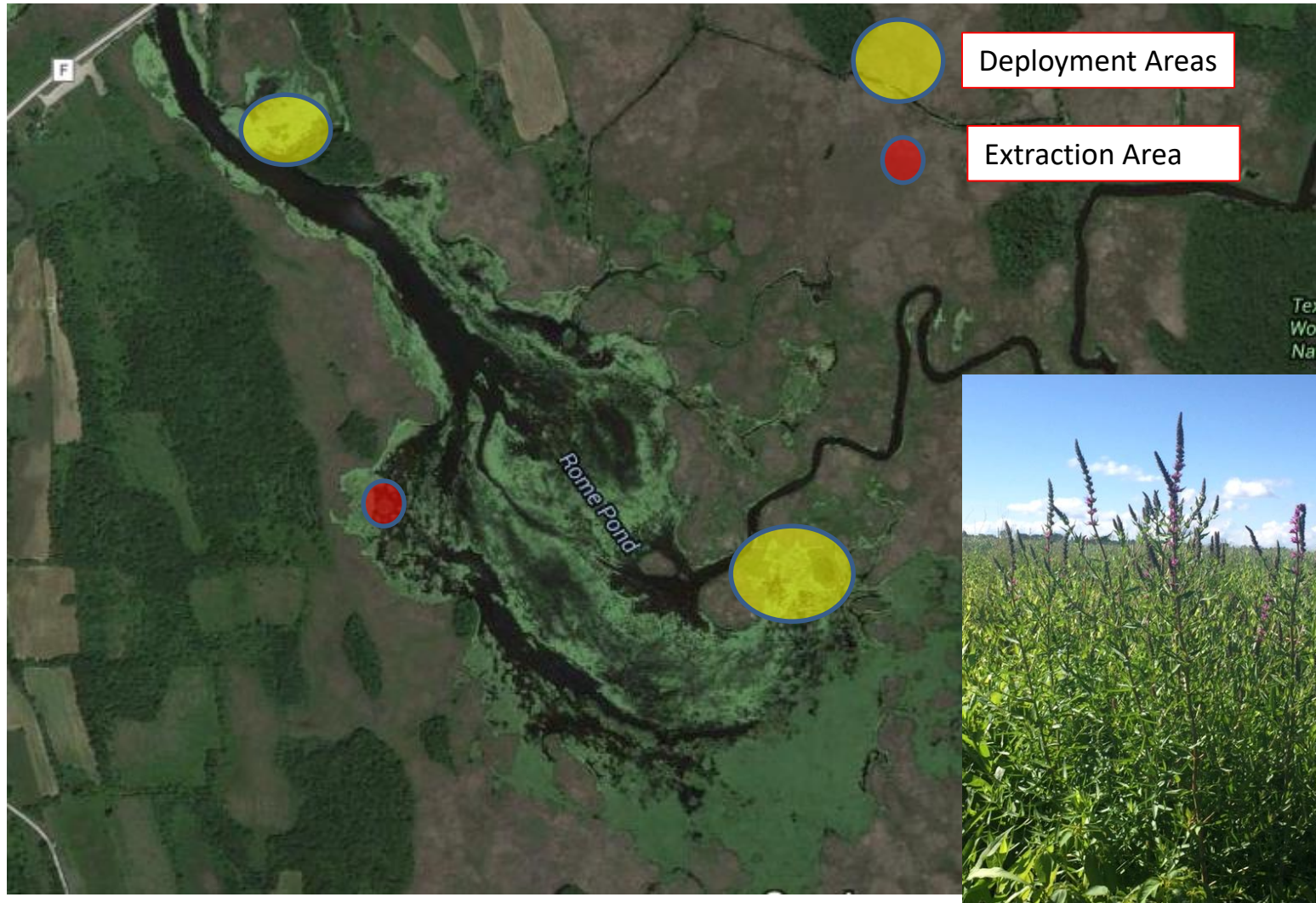
6/28/18: Three WWA volunteers and five DNR staff helped to load and deploy the plants in the marsh. Two WWA boats and one DNR boat were used.



Rome Pond, Jefferson County

11/12/18

Purple Loosestrife Locations: Overview Map

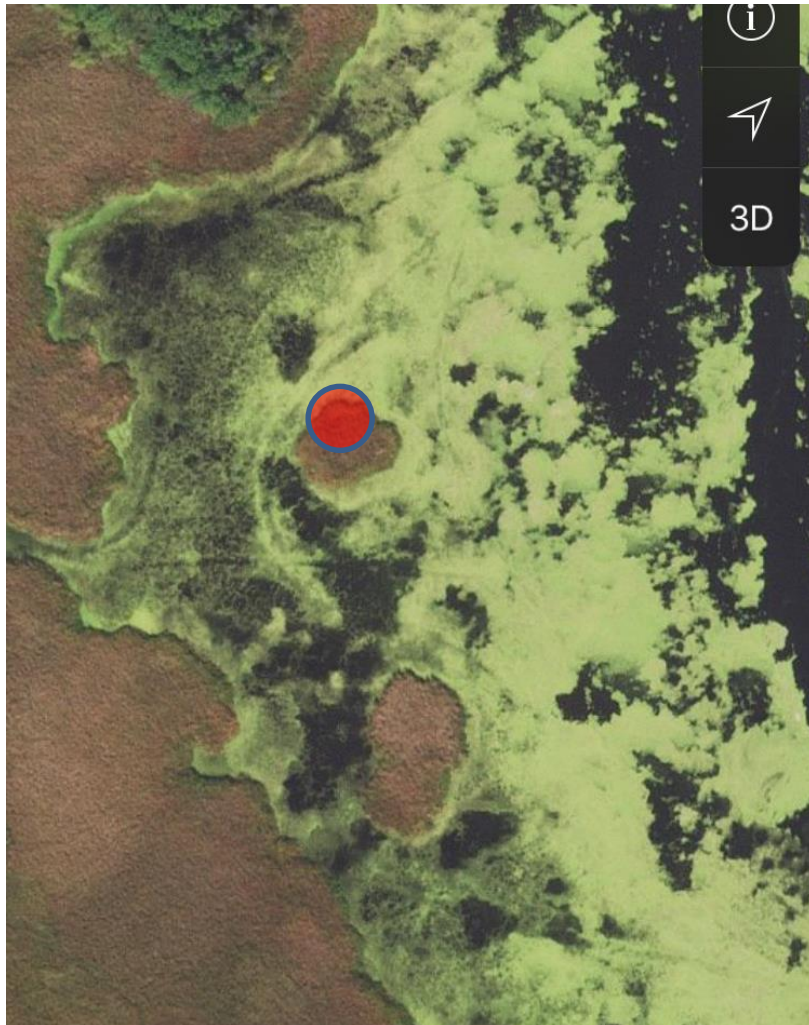




Rome Pond, Jefferson County

11/12/18

Purple Loosestrife Extraction Location:





Rome Pond, Jefferson County

11/12/18

Purple Loosestrife Extraction Team Pics:





Rome Pond, Jefferson County

11/12/18

Purple Loosestrife Potting Pics:

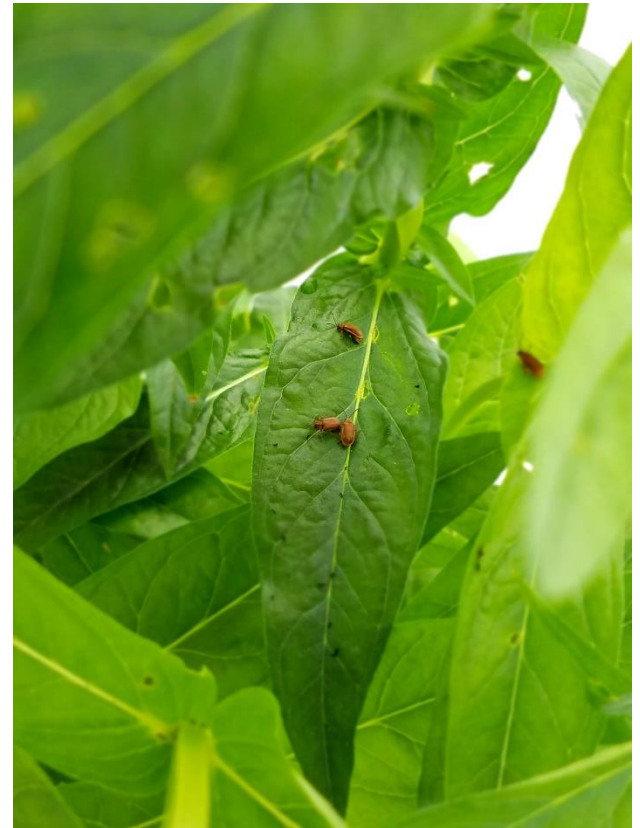




Rome Pond, Jefferson County

11/12/18

Off Site Raising and Hosting Pics (Ken Rheingans Homestead):





Rome Pond, Jefferson County

11/12/18

Purple Loosestrife Loading onto Boats: 6/28/18





Rome Pond, Jefferson County

11/12/18

Purple Loosestrife Beetle Deployment on Rome WA:

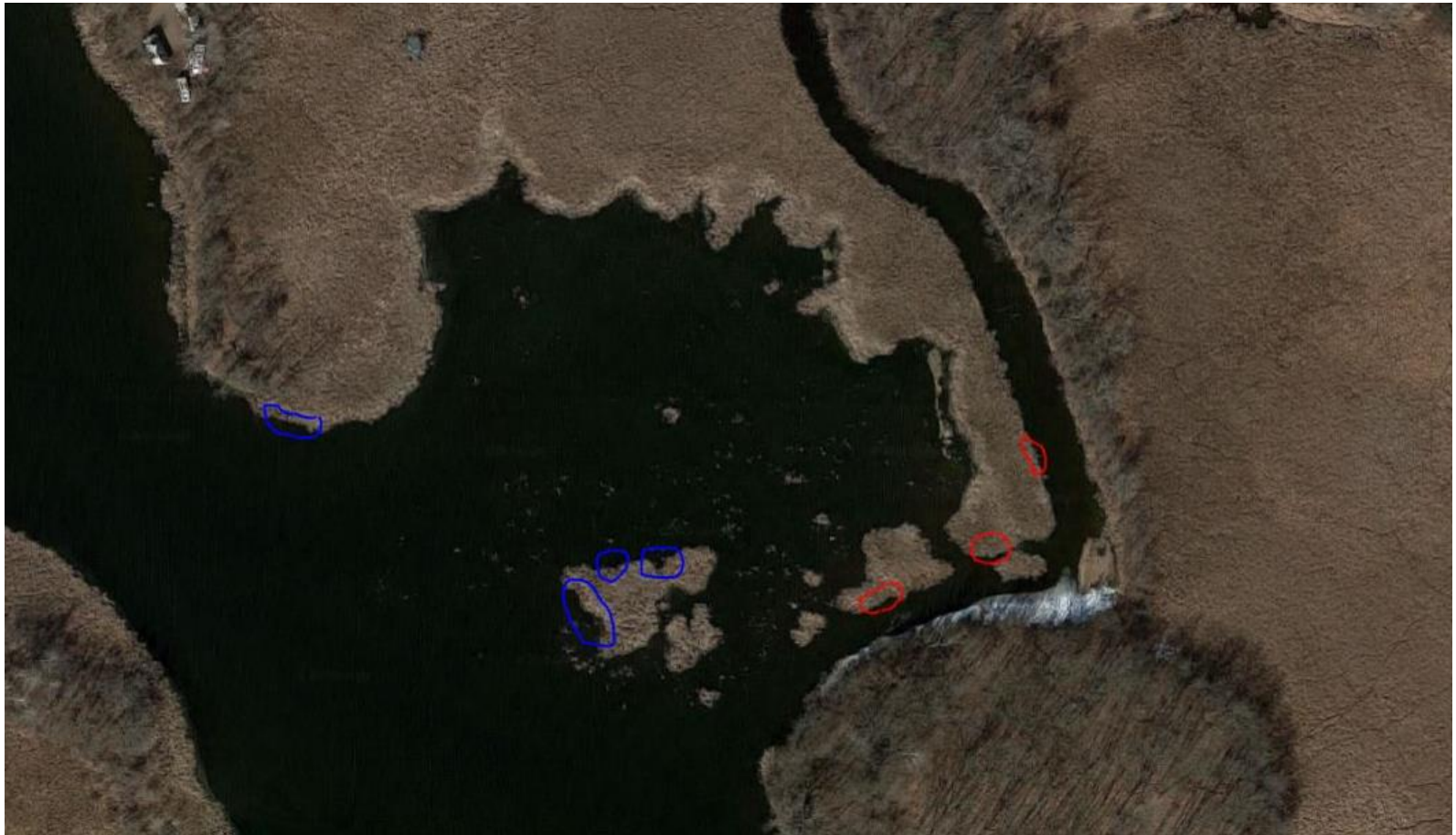




Rome Pond, Jefferson County

11/12/18

Purple Loosestrife Beetle Seeding Northern Locations:





Rome Pond, Jefferson County

11/12/18

Purple Loosestrife Beetle Seeding Southern Locations:





Rome Pond, Jefferson County

11/12/18

Purple Loosestrife Extraction Location 2017 of 51 plants - Significant Reduction:

